

Connor Profile

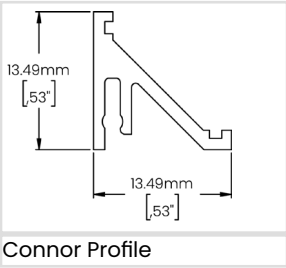
Available in a variety of light intensities and application methods, our Low Voltage Linear Solutions are widely versatile. They can be used either for their functionality, as design elements in a room or both.



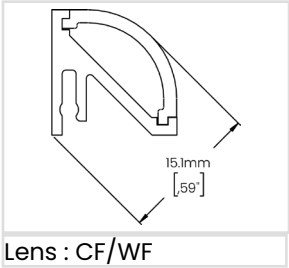
Highlights

Mounting	Surface Mounted with invisible bracket or double sided tape
Material	Aluminum Extrusion (6063-T5)
Features	Small, discreet, invisible mounting & easy to install
Recommended for	Corner application, cove lighting, under cabinet & woodworks

Dimensions



Connor Profile

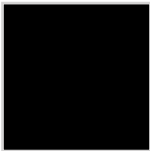


Lens : CF/WF

Aluminum Profile Colour



ACL - Clear Anodized



MBK - Matte Black



MWH - Matte White



CU - Custom; Specify RALK7 colour

Ordering Guide

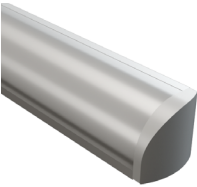
Ex : LWCR-FIE-48IN-MBK-CF-3MT

Product Code	Length	Aluminum Profile Colour	Lens Options	Installation
LWCR-FIE				
	48IN 48in 96IN 96in	ACL Clear Anodized MBK Matte Black MWH Matte White CU Custom (I)	CF Clear Frosted Lens WF White Frosted Lens NA None	3MT 3M Tape CRC Insert Clip NA None
Each profile is provided with a pair of endcaps including: 1 X Endcap without Hole 1 X Endcap with Hole		(I) Specify RALK7 code	Refer to page 2 for Lens Options	

Notes

Technical Information

Lens Options



CF/WF
Clear Frosted – White Frosted

LED Visibility & Light Loss Factor



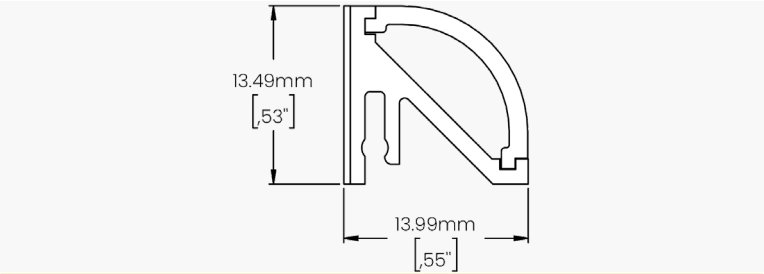
CF
Clear Frosted Lens
Visible
Light Loss: 8.5%



WF
White Frosted Lens
Barely Visible
Light Loss: 23.5%

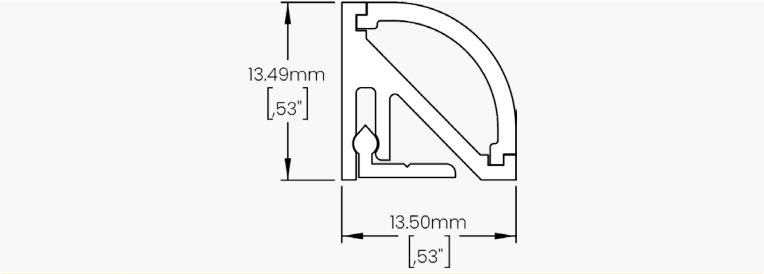
Installation Type

3M Tape



Details and Ordering	
Code	3MT-P9I-002
Mounting	Double sided tape
Quantity	Varies according to ordered length
Notes	LW recommends applying the tape to the entire length of the profile

Insert Clip

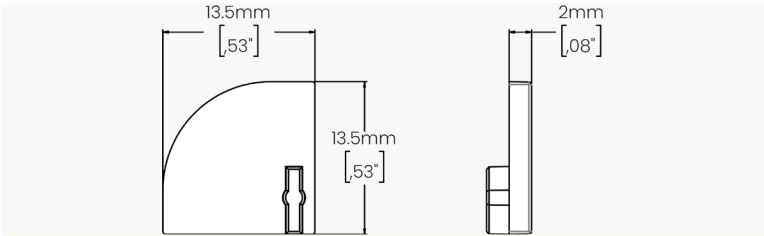


Details and Ordering	
Code	BRK-P19-009
Mounting	Surface Mounted
Quantity	Varies according to ordered length
Notes	Secure with Pin or Flat Head Screws

Technical Information

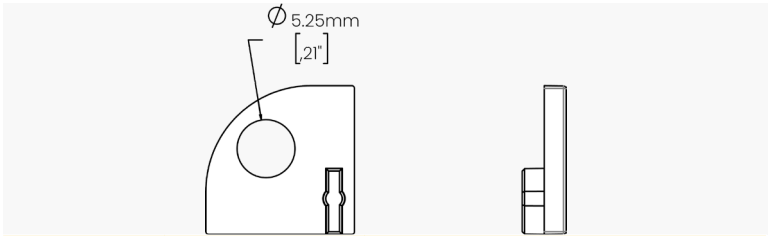
Endcaps

Without Hole (Left)



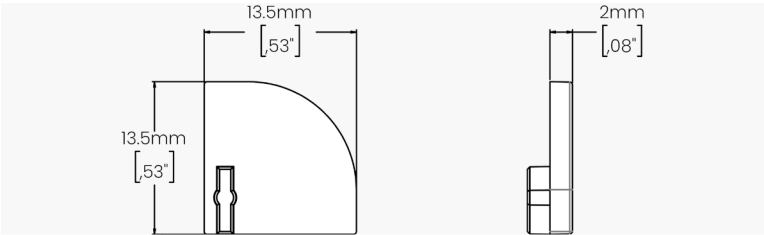
Details and Ordering		
Code	ECP-P19-001- _ _ _	
	To order additional endcaps to those already supplied by Lumen Warm, specify the desired colour by referring to the "Colour" section below.	
Material	ABS Plastic	
Colour	MBK - Matte Black	MGR - Matte Grey
	MWH - Matte White	CU - Custom; Specify RALK7 code

With Hole (Left)



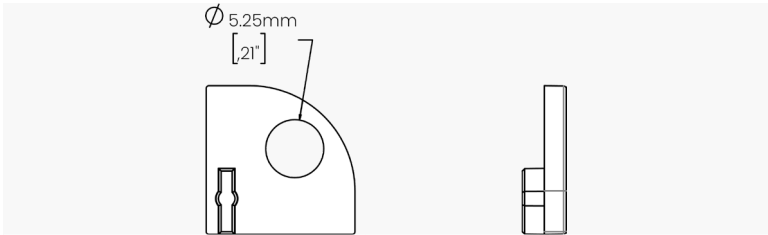
Details and Ordering		
Code	ECP-P19-002- _ _ _	
	To order additional endcaps to those already supplied by Lumen Warm, specify the desired colour by referring to the "Colour" section below.	
Material	ABS Plastic	
Colour	MBK - Matte Black	MGR - Matte Grey
	MWH - Matte White	CU - Custom; Specify RALK7 code

Without Hole (Right)



Details and Ordering		
Code	ECP-P19-003- _ _ _	
	To order additional endcaps to those already supplied by Lumen Warm, specify the desired colour by referring to the "Colour" section below.	
Material	ABS Plastic	
Colour	MBK - Matte Black	MGR - Matte Grey
	MWH - Matte White	CU - Custom; Specify RALK7 code

With Hole (Right)



Details and Ordering		
Code	ECP-P19-004- _ _ _	
	To order additional endcaps to those already supplied by Lumen Warm, specify the desired colour by referring to the "Colour" section below.	
Material	ABS Plastic	
Colour	MBK - Matte Black	MGR - Matte Grey
	MWH - Matte White	CU - Custom; Specify RALK7 code

Technical Information

Available LED Strips

Static White (Click for linked document)	Lumen Output	Consumption
LWHPC120	120lm/ft - 393.6lm/m	0.91W/ft - 3W/m
LWHPC290	290lm/ft - 951.2lm/m	2.59W/ft - 8.5W/m
LWHPC420	420lm/ft - 1377.6lm/m	3.51W/ft - 11.52W/m
LWHPC700	700lm/ft - 2296lm/m	5.85W/ft - 19.2W/m
LWHP900	900lm/ft - 2952lm/m	6.59W/ft - 21.6W/m
LWHE1150	1150lm/ft - 3772lm/m	7.32W/ft - 24W/m
LWHE1400	1400lm/ft - 4592lm/m	8.78W/ft - 28.8W/m
Dim to Warm (Click for linked document)	Lumen Output	Consumption
LWD2W480	480lm/ft - 1574.4lm/m	5.27W/ft - 17.28W/m
Tunable White (Click for linked document)	Lumen Output	Consumption
LWTW220	220lm/ft - 721.6lm/m	3.05W/ft - 10W/m
LWTW300	300lm/ft - 984lm/m	4.57W/ft - 15W/m
RGBW (Click for linked document)	Lumen Output	Consumption
LWRGBW250	250lm/ft - 820lm/m	4.68W/ft - 15.36W/m