

Olivia Profile

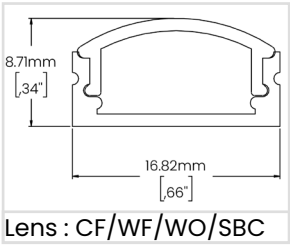
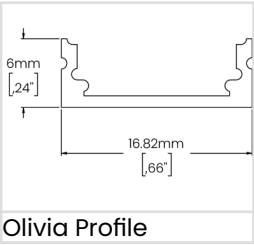
Available in a variety of light intensities and application methods, our Low Voltage Linear Solutions are widely versatile. They can be used either for their functionality, as design elements in a room or both.



Highlights

Mounting	Surface Mounted in groove with Brackets or Double Sided Tape
Material	Aluminum Extrusion (6063-T5)
Features	Thin, discreet, economic & easy to install
Recommended for	Cove lighting, under cabinet & woodworks

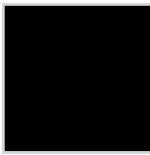
Dimensions



Aluminum Profile Colour



ACL – Clear Anodized



MBK – Matte Black



MWH – Matte White



CU – Custom; Specify RALK7 colour

Ordering Guide

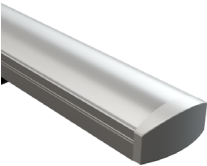
Ex : LWOL-FIE-48IN-MBK-CF-SMDBK

Product Code	Length	Aluminum Profile Colour	Lens Options	Installation
LWOL-FIE	48IN 48in 96IN 96in	ACL Clear Anodized MBK Matte Black MWH Matte White CU Custom (1)	CF Clear Frosted Lens WF White Frosted Lens WO White Opal Lens SBC Smoked Black Lens (2) NA None	3MT 3M Tape SMDBK Surface Mounted With Bracket ADJBK 180° Adjustable Bracket NA None
Each profile is provided with a pair of endcaps including: 1 X Endcap without Hole 1 X Endcap with Hole		(1) Specify RALK7 code	Refer to page 2 for Lens Options (2) For pixelation free visuals, Lumen Warm strongly recommends the use of 900lm/ft LEDs.	Supplied by Lumen Warm
				Length (in) Number of Mounting Brackets
				0-48 2 48-84 3 84-96 4

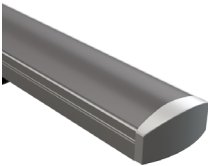
Notes

Technical Information

Lens Options



CF/WF/VO
Clear Frosted – White Frosted –
White Opal Lens



SBC
Smoke Black Lens

LED Visibility & Light Loss Factor



CF
Clear Frosted Lens
Visible
Light Loss: 8.5%



WF
White Frosted Lens
Barely Visible
Light Loss: 23.5%



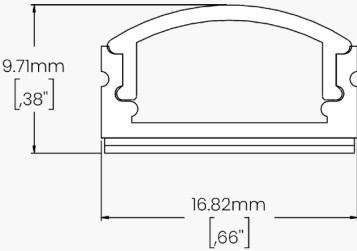
VO
White Opal Lens
Diffused
Light Loss: 37.5%



SBC
Smoke Black Lens
Barely Visible
Light Loss: 70%

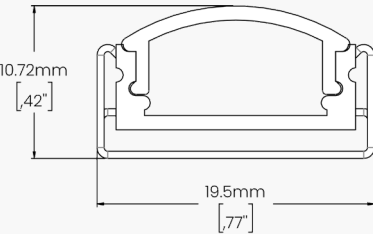
Installation Type

3M Tape



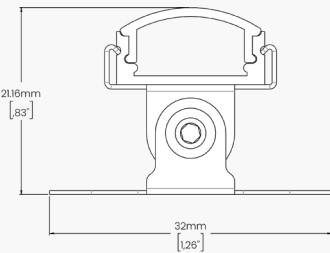
Details and Ordering	
Code	3MT-P9I-002
Mounting	Double sided tape
Quantity	Varies according to ordered length.
Notes	LW recommends applying the tape to the entire length of the profile

Surface Mounted With Bracket



Details and Ordering	
Code	BRK-PI3-001
Mounting	Surface Mounted in groove with clips
Quantity	A bracket every 24in.
Notes	LW recommends the use of #6 - 5/8" screws, not included, for their installation

180° Adjustable Bracket

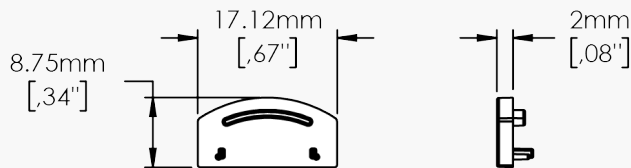


Details and Ordering	
Code	BRK-AI3-001
Mounting	Surface Mounted in groove with clips (180° pivot)
Quantity	A bracket every 24in.
Notes	LW recommends the use of #6 - 5/8" screws, not included, for their installation

Technical Information

Endcaps

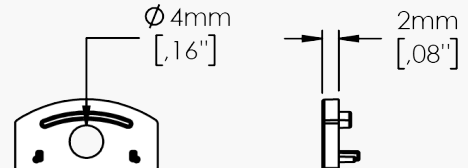
Without Hole for Lens : CF/WF/WO/SBC



Details and Ordering

Code	ECP-P13-019- _ _ _	
	To order additional endcaps to those already supplied by Lumen Warm, specify the desired colour by referring to the "Colour" section below	
Material	ABS Plastic	
Colour	MBK - Matte Black MWH - Matte White	MGR - Matte Grey CU - Custom; Specify RALK7 code

With Hole for Lens : CF/WF/WO/SBC



Details and Ordering

Code	ECP-P13-020- _ _ _	
	To order additional endcaps to those already supplied by Lumen Warm, specify the desired colour by referring to the "Colour" section below	
Material	ABS Plastic	
Colour	MBK - Matte Black MWH - Matte White	MGR - Matte Grey CU - Custom; Specify RALK7 code

Available LED Strips

Static White (Click for linked document)	Lumen Output	Consumption
LWHPC120	120lm/ft - 393.6lm/m	0.91W/ft - 3W/m
LWHPC290	290lm/ft - 951.2lm/m	2.59W/ft - 8.5W/m
LWHPC420	420lm/ft - 1377.6lm/m	3.51W/ft - 11.52W/m
LWHPC700	700lm/ft - 2296lm/m	5.85W/ft - 19.2W/m
LWHP900	900lm/ft - 2952lm/m	6.59W/ft - 21.6W/m
LWHE1150	1150lm/ft - 3772lm/m	7.32W/ft - 24W/m
LWHE1400	1400lm/ft - 4592lm/m	8.78W/ft - 28.8W/m
Dim to Warm (Click for linked document)	Lumen Output	Consumption
LWD2W480	480lm/ft - 1574.4lm/m	5.27W/ft - 17.28W/m
Tunable White (Click for linked document)	Lumen Output	Consumption
LWTW220	220lm/ft - 721.6lm/m	3.05W/ft - 10W/m
LWTW300	300lm/ft - 984lm/m	4.57W/ft - 15W/m
RGBW (Click for linked document)	Lumen Output	Consumption
LWRGBW250	250lm/ft - 820lm/m	4.68W/ft - 15.36W/m